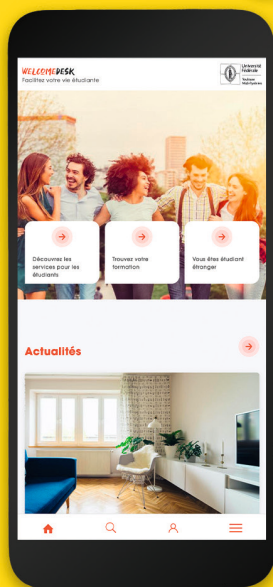


# Student housing

*the keys to a successful  
search*





RÉPUBLIQUE  
FRANÇAISE

Liberté  
Égalité  
Fraternité

l'accueil  
welcome desk

Université  
de Toulouse

# Students, you are in good hands!

**Caf • Crous • Préfecture  
CIO du Sup'**

**Make your administrative procedures easier:  
student housing information, scholarship, social  
welfare, right of residence, academic guidance,  
health, culture, sport, transport...**

**The Accueil–Welcome Desk teams are pleased  
to assist you and answer all of your questions  
on site or remotely.**

**Open all year from Monday to Friday  
9am–12:30pm | 1:30pm–5pm (6pm in September)**



L'Accueil–Welcome Desk  
University of Toulouse  
41, Allées Jules Guesde – Allée Matilda  
Toulouse

**Opening hours and booking on:  
[welcomedesk.univ-toulouse.fr](http://welcomedesk.univ-toulouse.fr)**

Supported by



Service provided by





# EDITORIAL



Whether getting started or pursuing a higher education programme, finding suitable accommodation is a primary consideration and one of the keys to successful study.

To help you through the jungle of finding somewhere to live, the associated administrative procedures and different possibilities for support, the University of Toulouse is proud to offer you this latest version of our housing guide which outlines the steps to take, the financial aid that is available and a directory of student residences, in Toulouse and in the other local student towns.

It also contains tips for each step of the process (finding accommodation, moving in, moving out, ...) and some useful contacts for temporary housing, shared housing, intergenerational housesharing, etc. This year we are delighted to announce the new complex of 382 appartements for international visitors, ideally situated in central Toulouse.

For more advice and answers to your specific questions, you can also come speak to us at the Welcome Desk, 41 allées Jules Guesde in Toulouse, along with our key partners and, in particular, the local Welfare and Benefits Office (CAF). If you can't come to us, please visit our website at [welcomedesk.univtoulouse.fr](http://welcomedesk.univtoulouse.fr), where you will find plenty of useful information.

We wish you the best of luck with your housing search and your studies in Toulouse!

Michael Toplis,  
President of University of Toulouse

---








Directeur de la publication : Michael Toplis  
Service communication : Mélanie Ducolombier, Sabine Aubineau  
Suivi de l'édition : Arthur Cros, Assia Bouhiri  
Création graphique et maquette : Céline Collaud

# With Toul'Box enjoy France *easily!*

To ease up your arrival in Toulouse and the region,  
you can benefit from the Toul'Box services through  
our packs specially designed for international students  
and researchers!

With your Toul'Box pack,  
**let us prepare  
everything for you!**

If you want to be ready before your arrival  
without stress, select the services  
that suit you best:

-  Airport pick up
-  Accommodation  
booking
-  French courses
-  Bank account opening
-  Administrative  
support
-  One-to-one with  
the Toul'Box Team
-  And much more!

Build your own  
**Toul'Box Pack**  
and *order now!*



<https://toulbox.univ-toulouse.fr/>

University of Toulouse's  
welcome tools are  
certified.



**U** Université  
de Toulouse





# CONTENTS

## Student accommodation 7

Compiling your housing application and defining your budget	8
Average student budget	10
What help is available?	12
The Visale guarantee	14
Types of accommodation	18
What to do once you have found your accommodation	21
Furnishing: think second-hand!	23
Moving out of your accommodation	23
Notes	26

## Student housing by city 29

Albi	30
Auch	32
Cahors	33
Castres	34
Figeac	35
Foix	36
Millau	37
Montauban	38
Rodez	39
Tarbes	41
Toulouse	42
Other housing options in Toulouse	52
Information and useful contacts in Toulouse	53



# Les bons plans étudiants



**Location, co-location**  
**Du studio au 4 pièces**  
**Près des universités**

**À partir de**  
**227 €/mois HC**  
**et avant APL**

## Des avantages



- APL
- 0 FRAIS DE DOSSIER
- GARANTIE VISALE
- GESTIONNAIRE SUR SITE
- ÉQUIPE À VOTRE ÉCOUTE POUR TOUTE DIFFICULTÉ
- LOGEMENTS ÉQUIPÉS

Ne pas jeter sur la voie publique



# Student accommodation



*Be prepared  
for your  
housing search!*

## The ideal time to find accommodation is from early July (Bac results) to mid-August

*It becomes more difficult at the beginning of the academic year as housing options are more scarce. If you can afford it, we recommend booking accommodation and paying rent for a few extra weeks, even if it is not occupied.*

1

### Compiling a housing application

**Here is a list of the documents that are usually requested:**

- a photocopy of your proof of identity (identity card, passport or residence permit)
- your student card or schooling certificate
- proof of address
- your bank account details
- your employment contract or your most recent pay slips, if applicable.

**The list of documents that your physical guarantor will have to provide (or a guarantee certificate if your guarantor is an organization) cf. p14:**

- three most recent pay slips plus employer statement
- proof of address
- proof of identity
- latest tax declaration.

To assist you, DossierFacile.fr is a free public service that helps you at every stage of creating your rental application.

2

### Calculating your budget for the 1<sup>st</sup> month and the rest of the year

It is essential to know your budget and any other expenses to be paid each month in advance so you can choose accommodation within your means. *Also, set aside enough money for temporary accommodation when you arrive and the compulsory upfront student accommodation fees.*

#### In the 1<sup>st</sup> month, you will have to pay

the 1<sup>st</sup> month's rent + the security deposit (one month of rent excluding utilities and service charges) + agency / application fees + furniture if the accommodation is unfurnished + home insurance.

#### The rest of the year

electricity / gas and internet bills (except in some student residences), and any other expenses that are not related to housing: studies, transport, food costs, recreation, etc. See the budget table on p10

## Various tips



**Housing location:** don't underestimate the time it will take to get from your home to where you study.



**Watch out for scams** and listings that seem too good to be true (rent that is too cheap for the area, perfect photos, etc.)



**When viewing accommodation,** have your application ready and with you to save valuable time!



**Never pay in cash** and don't hand over any money for rent or a security deposit before signing the rental agreement. Also, never send money by postal or money order or similar methods (e.g. Western Union).



**Never accept the services of a person** offering to sell you a "list of properties" in exchange for money, but with no guarantee of finding accommodation.



**Warning! A room of less than 9m<sup>2</sup>** does not qualify for housing benefits provided by the Caf!



# Instal'toit

**le prêt à taux zéro**

**18 - 29 ANS**

**La ville de Toulouse T'AIDE !**

### Pour qui ?

Étudiant, apprentis ou jeunes travailleurs\*, locataires d'un logement sur la commune de Toulouse depuis moins de 3 mois.

\* sous condition de ressources

### Où se renseigner ?

**05 61 22 31 91**

[aidesaulogement@mairie-toulouse.fr](mailto:aidesaulogement@mairie-toulouse.fr)

[www.toulouse.fr](http://www.toulouse.fr) - urbanisme habitat - aides au logement

**MAIRIE DE**



**TOULOUSE**

[www.toulouse.fr](http://www.toulouse.fr)

## HOUSING

- **Security deposit**  
(when you move into your accommodation)  
**1 month's rent**  
(without monthly charges)  
unfurnished  
**2 months' rent**  
(without monthly charges)  
furnished
- **Home insurance**  
(at time of renting)  
70€/ year



- **Monthly average cost**  
**Crous: €210 to €500**  
(according to the type of accommodation, besides shared flat, housing for families and couple and accessible accommodation for person with disabilities)  
**Private rental :**  
Average rent : €588  
(studio, one-bedroom flat)



## TRANSPORTATION

- **Bike**  
Vélô Toulouse bike hire subscription  
€20 a year

### **Bus / Metro / Tram**

Students under 26 years old:  
€133 per year / €13,10 per month  
[www.tisseo.fr](http://www.tisseo.fr)

### **Train**

[www.sncf.fr](http://www.sncf.fr)



## LANDLINE & INTERNET

€30 to 50€ per month

## MOBILE PHONE

€2 to 20 per month

*Student*



## ELECTRICITY GAS

€60 to €100  
per month

## FOOD

- **University Canteen (Resto U')**  
**€1 from to €3.30**  
€1 for grant recipient and non-scholarship students who can provide evidence of financial difficulties to the social services of Crous



## COMPLEMENTARY HEALTH INSURANCE

From €60 per year



*budget*



## OTHER EXPENSES

€200 per month  
(leisure, clothing, etc.)



## TRAINING/EDUCATION

- **Tuition fees 2024-2025**  
Bachelor's Degree **€175**  
Master's Degree **€250**  
PHD **€319**
- **Differentiated fees for international students (non E.U students)**  
Master's Degree **€3770**  
Bachelor's Degree **€2770**  
Doctorate **€380**
- **Student Contribution (Healthcare & socialprotection, sport and culture)**  
**€103**



# What help is available?

## Housing benefits provided by the Caf

**This is provided monthly and is for French and international students.** It is paid at the beginning of each month for the previous month (e.g. for the month of January it is paid in February). The first month spent in the accommodation does not qualify for housing benefits.

### > Please note:

- remember to notify the Caf in June if you are keeping your accommodation in July and August, otherwise your benefits will automatically be suspended,
- if you are under 21 and your parents receive child benefits, these will also be suspended if you apply for housing benefits. Think about it together!
- Visit [www.caf.fr](http://www.caf.fr) to do a simulation of how much you are entitled to in benefits.

### Apply online!

For all applications, have your bank account details and your rental agreement at the ready, which should include your landlord's contact information, and how much you pay in rent, utilities and service charges.

Supporting documents to be provided:

### For European students:

- Proof of identity
- European Health Insurance Card
- Schooling certificate
- Birth certificate.

### For non-European students:

- Passport + visa (and confirmation of validation of your residence permit) or residence permit
- Birth certificate + official translation

> **Contact :** [transmettreundocument.caf31@info-caf.fr](mailto:transmettreundocument.caf31@info-caf.fr)

**To find out more and apply once you have signed your rental agreement, book an appointment at the Welcome Desk: [welcomedesk.univ-toulouse.fr/](http://welcomedesk.univ-toulouse.fr/)** (41 allées Jules Guesde, Toulouse) and visit Caf.fr

## Insta'I Toit

**This loan facility is set up by the Toulouse city council** and covers various housing costs: rent, security deposit, agency fees, home insurance, etc.

### > Who is it for?

Young people aged 18 to 29 who are:

- enrolled in a higher education institution in the Toulouse metropolitan area
- in training programmes, apprenticeships, work / study programmes or young professionals moving out of "Habitats Jeunes" residences
- renting a property in Toulouse (and signed their rental agreement less than 3 months ago).

### > What type of accommodation does it cover?

Any type of accommodation

### > What does the benefit consist of?

The benefit amount is between €100 and €500 according to your needs and can be combined with the Loca-Pass advance.

### > Is there any interest to pay?

No, it is a zero-interest rate loan

### > Supporting documents to be provided:

- Proof of identity
- Proof of enrolment / schooling certificate
- Copy of rental agreement
- Bank account details
- Direct debit authorisation
- For young professionals, proof of departure from their Habitat Jeunes residence and proof of income (employment contract, last 3 payslips)
- Download the application form on the Toulouse city council website.

### > Repayments:

Monthly repayments of a minimum amount of €20,83 must be made from the first month following the start of the loan payments.

### > To find out more / apply:

<https://metropole.toulouse.fr/demarches/demander-laide-installait>

Toulouse city council housing benefits department: +33 (0)5.61.22.31.91

---

## L'AVANCE LOCA-PASS®

---

**This is provided by the association Action Logement and is used to pay for security deposits.**

### > Who is it for?

Young people under 30 who are in vocational training, looking for work or currently employed.

Students who:

- receive a grant from the French government
- can provide proof of an internship contract lasting at least three months that is in progress at the time of application
- can provide proof of a temporary work contract lasting at least three months, in progress at the time of application.

### > What type of accommodation does it cover?

Any type of accommodation

### > What does the loan consist of?

It covers the amount of the security deposit defined in your rental agreement, up to €1,200

For shared housing, it covers the share of the security deposit to be paid by the person receiving the benefit

### > Is there any interest to pay?

No, it is a zero-interest rate loan

### > Supporting documents to be provided:

- proof of identity
  - tenant's bank account details
  - landlord's bank account details
  - schooling certificate
  - final grant certificate for grant holders
  - copy of your signed rental agreement
- Additional supporting documents may be requested depending on your situation.*

### > Repayments:

- allow for a period of 3 months before your first repayment
- by direct debit from your bank account.

### > To find out more / apply:

- [www.actionlogement.fr](http://www.actionlogement.fr)
- Tel. +33 (0)970 800 800
- Take an eligibility test on [locapass.actionlogement.fr](http://locapass.actionlogement.fr)
- Crij Toulouse, 17 rue de Metz  
Tel. +33 (0)5.61.21.20.20

**A loan commits you and must be repaid. Check your repayment capacity before committing.**

**AVANCE LOCA-PASS® is a registered trademark on behalf of Action Logement. This loan is subject to conditions and granted subject to the approval of Action Logement Services. It is available within the limit of the maximum amount set by the current regulations.**

# Need a guarantor for your home?



VISALE, THE 100% FREE  
GUARANTOR THAT  
FACILITATES ACCESS TO  
HOUSING AND REASSURES  
YOUR LANDLORD

**Go to Action Logement !**



April 2023 - Action Logement Services - SAS with a capital of 20,000,000 euros - Head office: 19/21 Quai d'Orléans 75013 Paris - 824 541 148  
A Paris Trade and Company Register Registered with ORIAS under number 17006332 - Financing company approved and controlled by the ACPR  
A 100% equipped to assist you. A 100% free of charge. A 100% free of charge.

**VISALE.**   
CONNECTE EMPLOI ET LOGEMENT

**ActionLogement**   
RECONNU D'UTILITÉ SOCIALE

# The Visale guarantee

The Visale guarantee is also provided by Action Logement and is an alternative to the security deposit required by your landlord when you move into an accommodation. It is free of charge and can be applied for online at [www.visale.fr](http://www.visale.fr) (allow a few days to receive confirmation).

- Who is it for?**
- Young people, students and work / study trainees aged between 18 and 30
  - Anyone who is eligible for the mobility lease

**Eligibility conditions** **For students:** Being enrolled in a post-secondary institution for the current academic year

- What type of accommodation?**
- Any type of accommodation (excluding tourist residences and hotels)
  - It must be the tenant's main residence (= occupied during the academic year)
  - The accommodation must be located on French soil (metropolitan France, overseas departments, not including overseas territories)

**Do you have to pay for it?** Free for landlords and tenants

- Supporting documents**
- Proof of identity or passport (if you are French or an EU citizen) or residence permit / long-stay visa / talent passport
  - Proof of enrolment (student card / schooling certificate / certificate of enrolment)
  - Work-study programme contract if applicable
- Additional supporting documents may be requested depending on your situation

**Duration of coverage** Throughout the duration of the housing occupancy, coverage is provided for up to 36 unpaid monthly rents and charges for privately-owned housing, and up to 9 unpaid monthly rents for student rental housing in the social or similar sector (Crous, HLM)

- Possible to combine, under certain conditions, with other benefits**
- AVANCE LOCA-PASS® (zero-interest rate loan) to pay for your security deposit, to be paid to your landlord when signing the rental agreement
  - Housing benefits provided by the Caf
  - Work-study trainees can also lower their rent by applying for the «AIDE MOBILI-JEUNE®» housing benefit for young people

**To find out more / apply online**

- [www.visale.fr](http://www.visale.fr) / +33 (0)970 800 800
- Welcome Desk 41 allées Jules Guesde, 31000 Toulouse / [welcomedesk@univ-toulouse.fr](mailto:welcomedesk@univ-toulouse.fr)

# CREATE A CONCRETE



I connect to  
[www.dossierfacile.fr](http://www.dossierfacile.fr)



# AND SECURE RENTAL FILE



I upload my supporting documents (proof of identity, adress, ect. ...)

Once validated by the operators, my file is ready to be sent !

All I have to do is copy/paste the link to my DossierFacile file or send it in PDF format !



## Types of accommodation

1

### Private accommodation

This type of accommodation belongs to a private landlord who rents it out either directly or through an estate agency. It can be furnished or unfurnished.

It is perfectly possible to co-rent private accommodation with another tenant, provided the landlord agrees.

Rental prices depend on the surface area and location of the accommodation, **but remember that students are entitled to housing benefits**. The average rent for a studio apartment in the city center is 588 euros in the Toulouse metropolitan area.

Source: observatoiresdesloyers.org

You can check private accommodation listings at:

➤ [www.crous-toulouse.fr/courts-sejours/](http://www.crous-toulouse.fr/courts-sejours/)

➤ Crous  
[www.lokaviz.fr](http://www.lokaviz.fr)

➤ [www.pap.fr](http://www.pap.fr)

➤ [www.leboncoin.fr](http://www.leboncoin.fr)

➤ [www.immojeune.com](http://www.immojeune.com)

2

### Accommodation in a Crous residence

To apply, the first step is to create your student social file at the beginning of the calendar year. This must be done every year on [www.messervices.etudiant.gouv.fr](http://www.messervices.etudiant.gouv.fr).

Next, you will need to submit your housing preferences. Priority is given to scholarship students.

The schedule is available on [www.crous-toulouse.fr/logement](http://www.crous-toulouse.fr/logement).

International exchange students should contact the International Relations office of their host institution.



*For Crous residences in each city, see p27!*



If you are a student with disabilities, find all the information to apply for adapted housing on [www.crous-toulouse.fr/handicap](http://www.crous-toulouse.fr/handicap)

*Some useful links for temporary accommodation...*

[www.airbnb.fr](http://www.airbnb.fr)

[www.couchsurfing.com](http://www.couchsurfing.com)

Remember to contact youth hostels as well as Habitat Jeunes residences

*For more temporary accommodation and short-stay options organised by city, check this guide as well as our website [welcomedesk.univ-toulouse.fr](http://welcomedesk.univ-toulouse.fr)*



3

## Social housing for students

Social housing (also known as «Hlm» in French) refers to housing units managed by social landlords (such as Promologis, Le Groupe des Chalets / Oh Mon Appart, Toulouse Métropole Habitat, ALTEAL). A social housing unit can be a bedroom, a studio, a one-bedroom apartment (T2), etc., located in a student residence or a mixed-use residence, either as an individual unit or as a shared accommodation.

**Any student can apply for social housing by visiting :**

**[www.demandelogement31.fr](http://www.demandelogement31.fr).**

Alternatively, this request can also be made directly at a registration office. The list of registration offices and additional information can be found here: <https://metropole.toulouse.fr/demarches/faire-une-demande-de-logement-social>

Once the application is submitted, the candidate's file is reviewed by a committee responsible for allocating the hou-

5

## A private room

This is a bedroom rented out in an individual's home. The kitchen and bathroom are shared with them and their family. Some may also offer a shared living space, and possibly breakfast and an evening meal.

### **Please note:**

the rental agreement must specify the services provided.

### **The advantage?**

the rent is often cheaper, and you will be eligible for housing benefits provided by the Caf.

4

## Intergenerational housesharing

This consists of a student living with a senior citizen who has a spare room in their home. This type of housing is advantageous for both the student who, in return for various services, pays low or sometimes even no rent, and the senior citizen who gets to have some company and avoid living in isolation.

For more information on intergenerational housesharing, visit **[www.cohabilis.org](http://www.cohabilis.org)**



***Please note: There are also private student residences, otherwise known as “service residences”, that are not listed in this guide. They can be found at <https://www.adele.org>***

### **Here are some useful websites:**

- Private room exchange for students or in return for intergenerational services: **[www.troetchambre.com](http://www.troetchambre.com)**
  - Private room rental listings when you sign up for free on Roomlala: **[fr-fr.roomlala.com](http://fr-fr.roomlala.com)**
  - Cohebergement.com: **[www.cohebergement.com](http://www.cohebergement.com)**
  - A solution for multigenerational housing and cohabitation: **[www.chambreHabitant.fr](http://www.chambreHabitant.fr)**
- Find listings with private individuals on the central platform for student housing managed by Crous: **[www.Lokaviz.fr](http://www.Lokaviz.fr)**

6

## Habitat Jeunes residences provided by the Regional Union for Youth Habitat (URHAJ):

These are available to young people aged 16 to 30 who are employed, apprentices, students, trainees or job seekers on benefits. Several types of furnished accommodation are available (studio, one-bedroom flats, etc.) and they can be individual or shared. In Habitat Jeunes residences, various guidance, workshops and activities are available to residents.

**[www.habitatjeunesoccitanie.org](http://www.habitatjeunesoccitanie.org)**

### Here are some websites with shared housing listings:

➤ Check shared housing listings by signing up for free on:  
**[www.lacartedescolocs.fr](http://www.lacartedescolocs.fr)**

➤ Find shared housing or a flatmate by signing up for a free basic account that allows you to access certain listings, or by paying for a premium account in order to be able to contact them all and to be contacted:  
**[www.appartager.com](http://www.appartager.com)**

7

## Shared housing:

This is one of the cheapest housing options available that also enables you to have a bigger living space. However, you do have to be ready to share common areas on a daily basis (living room, kitchen, bathroom, etc.) as well as the rent and utilities.

Each member of the household must be listed in the rental agreement. If you join a pre-existing flatshare or houseshare, you will need to draft an amendment to the rental agreement.

### There are two types of rental agreement for this type of housing :

**1. A single rental agreement** in which all the members of the household are listed, but be aware of the solidarity clause that binds the tenants together until the end of the contract! This clause stipulates that if you leave the house or flat before the term of the rental agreement, and the other tenants fail to pay all the rent due, you will be liable for the amount owing. The clause ceases to be effective 6 months after the end of your notice period.

**2. An individual rental agreement** (for each tenant), to which the solidarity clause does not apply; however, the landlord can decide who is allowed to join the household.

➤ Shared housing listings on **[www.leboncoin.fr](http://www.leboncoin.fr)**  
**[www.lokaviz.fr](http://www.lokaviz.fr)**

and **<https://www.campus-et.toits>**.

## *Some steps to take before moving in*

Before unpacking your things and settling into your new home, there are a few more steps you need to take.



### Home insurance

As soon as you have found the right accommodation and before meeting with the landlord to receive the keys, you must take out home insurance. This is compulsory in order to protect you from various risks (fire, water damage, burglary, etc.). You can take out a policy with a mutual insurance company, bank or private insurer.

**If you are part of a flatshare or houthare, except for clauses stated in the lease agreement, each tenant needs to take out home insurance.**



**Tip: choose a comprehensive policy that also includes liability insurance.**

*French Government creating a centralized webpage providing information to students searching for housing*

All the tools to find accommodation, a guarantor, helpful websites, procedures, and financial assistance to help you secure housing:

<https://www.etudiant.gouv.fr/fr>



### The guarantor

The guarantor undertakes to pay the rent and utilities and service charges on behalf of the tenant if the latter is unable to do so. This guarantor must be creditworthy, i.e. able to show that they have sufficient income and are capable of assuming this responsibility. This is required by most agencies and landlords.

**If no-one can be a guarantor for you,** you can apply online for the Visale guarantee, which is a free rental security deposit.



**See the Visale guarantee table on p15**

If you do not meet the eligibility criteria for one of these guarantees, you can contact a bank or ask your landlord whether they will agree to let you pay several months' rent up front.



## The security deposit

**You will then have to pay a security deposit** that is usually the equivalent of a month's rent excluding utilities and service charges for unfurnished accommodation, and two months for furnished accommodation. It will be returned to you when you move out, but may be deducted from in the event of any damage to the accommodation.



*L'AVANCE LOCA-PASS® provided by Action Logement, can accompany you to pay this security deposit. See the housing benefits table on p12*



## The rental agreement

**You can now sign your rental agreement (or «lease»)**, of which each party gets a copy (landlord, tenant, guarantor). It contains all the information about the accommodation you are going to be living in (duration of the rental agreement, contact information of the landlord and the tenant, accommodation type and description, price of rent, and utilities and service charges). It also lists the landlord and tenant's rights and obligations.



## Incoming inventory

The day you get the keys to your new home, you will carry out an incoming inventory with the landlord. This is a full and very precise description of the accommodation, drawn up in duplicate.

**Be sure to describe any visible damage, even if it is very minor, and keep a copy of this document until the day you move out.** On this day, if the exit inventory matches the incoming inventory, your security deposit will be returned to you within one month. If the exit inventory does not match the incoming inventory, the landlord has two months to return your security deposit and the expenses to cover the damage will be deducted. After the incoming inventory, you can finally get the keys to your new home!



## Signing up with providers

**As soon as you move in**, you will need to open an account in your own name with utility companies (electricity or gas, as the case may be) and an internet provider.

Generally speaking, if you are living in a student residence or renting a private room in an individual's home, these expenses will take the form of a flat rate and are usually included in the rent.



## Housing benefits provided by the Caf

**Whether you are French or an international student**, you can apply for housing benefits provided by the Caf when renting accommodation. This is a monthly payment.

**Contact your city council** to find out what local services are available (e.g. Instal'Toit, set up by the Toulouse city council)



**See the housing benefits table on p12**

## Work-study trainees / apprentices

**Action Logement supports young people under 30, who are in apprenticeship programs** within non-agricultural private sector companies, through the MOBILI-JEUNE® assistance program. This program covers a portion of their rent, up to €100 per month. Visit [mobilijeune.actionlogement.fr](https://mobilijeune.actionlogement.fr) to check your eligibility.

Assistance subject to conditions, available within the limits of the maximum amount set by current regulations, and granted subject to the approval of Action Logement Services.

MOBILI-JEUNE® assistance is a registered trademark on behalf of Action Logement.

**For more information** on the other benefits offered by Action Logement, visit [actionlogement.fr](https://actionlogement.fr)

## Furnishing: think second-hand!

In order to save money on furniture, there are various associations, student initiatives and organisations that will allow you to furnish your accommodation more cheaply, e.g. with recycled furniture.

**For more information, visit** [welcomedesk.univ-toulouse.fr/se-meubler](https://welcomedesk.univ-toulouse.fr/se-meubler)

## Moving out?

**For all the steps you need to take before doing so, visit:**

**<https://welcomedesk.univ-toulouse.fr/en/vie-quotidienne/se-loger/moving-out-your-accommodation>**



RÉPUBLIQUE  
FRANÇAISE

*Liberté  
Égalité  
Fraternité*



# Crous\*

logement

social

bourses  
aides  
financières

culture  
animations

restauration

jobs



Service  
public  
étudiant

concept art: vladimir.fr

@CrousToulouse | crous-toulouse.fr

ÇA  
VOUS  
DIT  
DE VENIR  
FAIRE  
UN PETIT  
**TOURS?**

ON PEUT  
ALLER  
À LA MER  
**ROUEN**  
VILLE!

NULLE  
PART  
AILLEURS,  
T'AS NI  
CE CHOIX  
**NICE**  
PRIX LÀ!

ÇA SE  
**CORSE**  
AVEC  
TOUT  
CE CHOIX!

**VOUS AUSSI, PROFITEZ DE  
COURTS SÉJOURS À PRIX CROUS!**





## *Mou logement : Les éco-gestes du quotidien*

**Lighting, heating, washing, cooking, and doing the dishes... all these everyday activities can impact your budget and the environment. Adopt simple habits!**

### *Save Energy!*

- Turn off the lights when you leave a room.
  - Unplug devices when they're not in use (computer, phone).
  - Use power strips to easily turn off unused equipment.
- Use low-consumption LED bulbs.  
Remember to turn off the Wi-Fi at night and/or when you're away

### *Heating / Thermal Comfort*

- Heating accounts for a significant portion of annual energy expenses in a home. Lowering the heating by 1°C can save 7% of energy per year. 19°C is an ideal temperature in winter.
- If you're away all day, lower the thermostat!
- Turn off the heating when you ventilate your home!
- Let light into rooms during the day and close shutters/curtains at night to better retain heat.
- In summer, ventilate at night and close during the day to keep it cool.

### *Water*

- Don't let water run continuously when brushing your teeth, washing, or doing the dishes: on average, 9 liters of water flow from the tap every minute.

- A dripping faucet = 100 liters of water per day, which is over 100 € per year.
- Water leaks (toilet, sink, flush) = 400 liters of water per day, which is over 400 € per year. (Source: Water Agencies - Public Institutions of the Ministry of Sustainable Development)
- Installing aerators on taps can reduce water consumption by 25% – and placing the faucet in the cold position when off prevents calling for hot water each time.
- Fully load washing machines and dishwashers and use eco or cold wash modes.

## *Waste*

- Learn about the recycling system in your area: with the expanded sorting instructions, all plastics/cardboards/papers/metals are recyclable!
- Recycled waste should be placed loose in your bin without a bag.
- Bring your food waste to composters available in parks and gardens or your residence.
- Consider buying in bulk to reduce waste.

## *Know the Energy Efficiency of Your Home*

When renting a home, it is mandatory to provide an Energy Performance Certificate (EPC) less than 10 years old, conducted by a professional. This document allows you to know if your home is energy-efficient and environmentally friendly. It also provides an estimate of annual housing costs based on your home's characteristics and for standard usage in five areas (heating, hot water, air conditioning, lighting, and auxiliary).

# NOTES





# Student housing by city



## *Mémo pictos*



Accessibility



Possibility of  
shared housing



ToulBox partner



Housing for work /  
study trainees



Possibility of  
short-term stay

*Rent prices and monthly rates are provided for information purposes only and may vary. For more details, please contact the organisation in charge of the accommodation.*

# Albi

## Résidence Lapérouse - Crous

2, rue Descartes 81000 Albi

Rent between €280 and €400 including service charges

**CONTACT** +33 (0)5 63 48 16 92

[residence.laperouse@crous-toulouse.fr](mailto:residence.laperouse@crous-toulouse.fr)  
<https://www.crous-toulouse.fr/logement/laperouse/>

## Résidence L'Astrolabe - Crous

13, rue de la Poudrière 81000 Albi

Rent between €280 and 383, including service charges

**CONTACT** +33 (0)5 63 48 16 92

[residence.lastrolabe@crous-toulouse.fr](mailto:residence.lastrolabe@crous-toulouse.fr)  
<https://www.crous-toulouse.fr/logement/lastrolabe/>

## Résidence Nobel - Crous

36, Place du 19 mars 1962 81000 Albi

The monthly rent is € 297

**CONTACT** +33 (0)5 63 48 16 92

[residence.nobel@crous-toulouse.fr](mailto:residence.nobel@crous-toulouse.fr)  
<https://www.crous-toulouse.fr/logement/nobel/>



## Habitat Jeunes en albigeois - URHAJ

### Résidences Résidences Sirius et Aurore

50-60 rue Croix Verte 81000 Albi

### Résidence Polaris

Avenue du Loirat, 81000 Albi

Rent between €328 and €537 including service charges\*\*

### Résidence Vénus

3 rue Jules Rolland 81 000, Albi

**CONTACT** +33 (0)5 63 54 16 47

[contact@habitat-jeunes-albi.fr](mailto:contact@habitat-jeunes-albi.fr)  
<https://habitat-jeunes-albi.fr/>

*Other accommodation available*

## L'IMT Mines Albi

Allée des sciences 81000 Albi

Has its own residences reserved for its students.

<https://www.imt-mines-albi.fr/fr/hebergement>

**CONTACT** +33 (0)5 63 49 30 00

## Le bailleur social Tarn Habitat

Provides support for your social housing application and other housing matters.

**CONTACT** 05 63 77 81 81

[office@tarnhabitat.fr](mailto:office@tarnhabitat.fr)  
[www.tarnhabitat.fr](http://www.tarnhabitat.fr)

### Mémo pictos



Accessibility



Possibility of shared housing



Housing for work / study trainees



Possibility of short-term stay

\* **Student rate.**

\*\* **Rental information:**

contact the residence / school directly.



*More infos*

[welcomedesk.  
univ-toulouse.fr/  
logement](http://welcomedesk.univ-toulouse.fr/logement)



Résidence Crous L'Astrolabe

## Shared housing with the KAPS solidarity project

Living in a shared accommodation + engaging in community service in the neighborhood = a real-life experience of community and solidarity, worth highlighting on your CV! + <https://rejoins.afev.org/kaps/albi/>

### Temporary accommodation

Let's take a look at the possible solutions and good deals!

**CONTACT** <https://www.mairie-albi.fr/fr/logement-hebergement-temporaire>

## Logement intergénérationnel

Association Intergénérationnel 81 32, rue des carmélites 81000 Albi  
<https://www.mairie-albi.fr/fr/le-logement-intergenerationnel-une-colocation-gagnante>

**CONTACT** +33 (0)6 71 05 02 49  
[generationconseils@gmail.com](mailto:generationconseils@gmail.com)  
[intergenerationnel81.fr](https://intergenerationnel81.fr)



## Accommodation listings and administrative support

### Institut National Universitaire Champollion

Contact the Guichet Unique for information:

Monday to Thursday:

7:45 am - 5:30 pm &

Friday: 7:45 am - 5:00 pm.

Place de Verdun 81 000 Albi

Ground floor of the administrative building.

**CONTACT** +33 (0)5 63 48 17 17  
[guichet-unique@univ-jfc.fr](mailto:guichet-unique@univ-jfc.fr)

### The "Boutique Logement Jeunes"

Supports, informs and guides young people in Tarn aged 16 to 25 who are looking for accommodation.

**CONTACT** +33 (06) 46 56 91 48  
[boutiquelogement@habitat-jeunes-albi.fr](mailto:boutiquelogement@habitat-jeunes-albi.fr)  
<https://habitat-jeunes-albi.fr/boutique-logement/>

### Info Jeunes Tarn

1 place de la Résistance  
81000 Albi

**CONTACT** +33 (0)6 52 01 43 69  
[coordination.ijt@leolagrange.org](mailto:coordination.ijt@leolagrange.org)  
<https://pourlesjeunestarnais.com/fr/>

### Lokaviz.fr

As there are a limited number of places in university residences, the Crous offers a plan B with its private room rental service.

# Auch



## Résidence Habitat Jeunes

### Le Noctile - URHAJ

2 Ter rue du 8 mai 32 000 Auch

Rental rates\*\*

**CONTACT** +33 (0)5 62 64 02 32

[www.lenoctile.fr](http://www.lenoctile.fr)



## Résidence Claire de Castelbajac - La Maison Diocésaine

13 Rue Dr Samalens 32 000 Auch

Close to IUT Paul Sabatier

Rental rates\*\*

**CONTACT** +33 (0)6 17 19 61 10

[residence-cdc@diocese32.org](mailto:residence-cdc@diocese32.org)

<https://diocese32.org/residence-etudiante/>

## *Housing associations*

### Toit de Gascogne

68, rue Dessoles 32 000 Auch

### Résidence Darwin

### Résidence Embaques

Close to IUT

Rental rates\*\*

**CONTACT** +33 (0)5 62 61 69 91

[a.vigouroux@toitdegascogne.fr](mailto:a.vigouroux@toitdegascogne.fr)

<https://toitdegascogne.fr/>



## Office public de l'habitat - OPH 32

71 rue Jeanne d'Albret 32 000 Auch

Close to sixth-form colleges and IUT

**CONTACT** +33 (0)5 62 60 14 50

[contact@oph32.fr](mailto:contact@oph32.fr)

<https://www.oph32.fr/>



## *Accommodation listings and administrative support*

### La Maison du Logement

7, bis rue Gambetta 32 000 Auch

La Maison du logement provides information and support to those looking for accommodation by listing vacancies in the town of Auch and its surrounding areas.

**CONTACT** +33 (0)5 62 05 52 80

[contact@maisonlogement.com](mailto:contact@maisonlogement.com)

<https://www.mairie-auch.fr/index.php/habitat-et-urbanisme-auch/habitat-et-logement/2368-maison-du-logement>

### Plateforme J'loge Gers

This is a housing platform for people under 30 looking for accommodation in the Gers.

<https://jloge.fr>

### Infos Jeunes Auch

16 bis rue Rouget de Lisle

32 000 Auch

**CONTACT** +33 (0)5 62 60 21 21

[bij@imaj32.fr](mailto:bij@imaj32.fr)

\* **Student rate.**

\*\* **Rental information:**

contact the residence / school directly.



# Cahors



## Résidence Habitat Jeunes Jean-Jaurès - URHAJ

188 avenue Jean Jaurès 46 000 Cahors  
Rent: €300 including service charges

**CONTACT** +33 (0)5 65 31 29 32  
[contact@lotpourtoits.fr](mailto:contact@lotpourtoits.fr)



## Association pour l'habitat de jeunes en Quercy - URHAJ

129 rue Fondue Haute 46 000 Cahors  
(Old quarter). Rent between €274 and  
€402 including service charges

**CONTACT** +33 (0)5 65 35 29 32  
[afja46@yahoo.fr](mailto:afja46@yahoo.fr)  
<https://www.habitatjeunes.org/logements/asso-habitat-des-jeunes-en-quercy/>

## Info Jeunes Grand Cahors

430 Allées des Soupîrs, les Docks  
46 000 Cahors

The Grand Cahors has implemented a label to facilitate the renting of properties from private owners to young people, ensuring the quality of the accommodations. Information and housing listings are available at the Youth Information Point.

**CONTACT**  
+33 (0)5 65 24 13 66  
+33 (0)7 61 72 43 34  
[infojeunes@grandcahors.fr](mailto:infojeunes@grandcahors.fr)  
<https://cahorsagglo.fr/le-point-info-jeunes>

## Housing associations



### Résidences Polygone

25 boulevard Gambetta, 46 000 Cahors  
Accommodation consisting of  
3 residences for students, apprentices  
and young people under 30 with a  
professionalisation contract.  
Rental rate\*\*

**CONTACT** +33 (0)5 65 35 40 40  
[polygone46@polygone-sa.fr](mailto:polygone46@polygone-sa.fr)  
[www.polygone-sa.fr](http://www.polygone-sa.fr)

### Lot Habitat

23 avenue A. Juin, 46 000 Cahors

**CONTACT** +33 (0)5 65 53 20 20  
[ophlm46@lot-habitat.com](mailto:ophlm46@lot-habitat.com)  
[www.lot-habitat.com](http://www.lot-habitat.com)  
Apply for social housing at:  
[www.demande-logement-social.gouv.fr](http://www.demande-logement-social.gouv.fr)

## Temporary / Short-term accommodation



### Le Chai - Youth Hostel

52 avenue André-Breton 46 000 Cahors

**CONTACT** +33 (0)5 36 04 00 80  
[cahors@hifrance.org](mailto:cahors@hifrance.org)  
[www.hifrance.org/auberge-de-jeunesse/cahors-le-chai.html](http://www.hifrance.org/auberge-de-jeunesse/cahors-le-chai.html)

# Castres

## Résidence le Sidobre - Crous

Rue Firmin Oulès 81100 Castres

Close to IUT

The monthly rate is € 358 including service charges

**CONTACT** +33 (05 63 35 21 80  
[residence.lesidobre@crous-toulouse.fr](mailto:residence.lesidobre@crous-toulouse.fr)  
[www.crous-toulouse.fr/le-sidobre](http://www.crous-toulouse.fr/le-sidobre)



## Résidence le Corporal - URHAJ

7 et 9 rue Pasteur Hubac 81100 Castres

"Les Pins"

"Les Lauriers"

Close to CFA Anne Veaute

Rent between €293 and €345 including service charges

**CONTACT** +33 (0)5 63 62 58 10  
[accueil@habitat-jeunes-castres.fr](mailto:accueil@habitat-jeunes-castres.fr)  
[www.habitat-jeunes-castres.fr](http://www.habitat-jeunes-castres.fr)



## Office Public de l'Habitat de Castres - OPH-Castres

Provides student accommodation:

Résidence 2 place Bouffard

Résidence 24 rue de la Tolosane

Rent between €179 and €298 including service charges

**CONTACT** +33 (0)5 63 62 61 00  
[secretariat.direction@oph-castres.fr](mailto:secretariat.direction@oph-castres.fr)  
<https://www.oph-castres.fr/espace-demandeurnotre-offre-etudiants>

*Accommodation listings  
and administrative  
support*

## Le Syndicat Mixte

39 rue Firmin Oulès 81100 Castres

Supports students looking for accommodation by offering an online "housing contact point".

This contains listings exclusively for students from private landlords, estate agencies or social housing offices.

**CONTACT** +33 (0)5 63 62 11 64  
[contact.syndicadmixte@iut-tlse3.fr](mailto:contact.syndicadmixte@iut-tlse3.fr)  
Accommodation listings available on:  
<https://www.castres-mazamet.fr/etudier/le-syndicat-mixte>

## Résidence Le Martinet

9004 Rue du Village, 81100 Castres

21 studio apartments between €350 and €367, including a three-room apartment for €446

**CONTACT** 05 65 34 26 71  
[residence.lemartinet@crous-toulouse.fr](mailto:residence.lemartinet@crous-toulouse.fr)

### Mémo pictos



Accessibility



Possibility of shared housing



Housing for work / study trainees



Possibility of short-term stay

# Figeac



## Résidence Françoise Sagan - Crous

La Pintre 46 000 Figeac

Close to IUT

Rent between €269 and €289 including service charges

**CONTACT** +33 (0)5 65 50 06 80  
[residence.francoisesagan@crous-toulouse.fr](mailto:residence.francoisesagan@crous-toulouse.fr)  
[www.crous-toulouse.fr/francoise-sagan](http://www.crous-toulouse.fr/francoise-sagan)



## Résidence Habitat Jeunes Les Soleihos - URHAJ

8 avenue Bernard Fontanges

46 100 Figeac

Rent between €300.20 and €483.60 including service charges

**CONTACT** +33 (0)5 65 38 62 75  
[rjh.soleihos@anras.fr](mailto:rjh.soleihos@anras.fr)  
[rhjlessoleihos.anras.fr](http://rhjlessoleihos.anras.fr)



## Lot Habitat

Montviguier, Bât. B av. du Grial

46 100 Figeac

**"Nayrac" and "Les Miattes"**

Possibility of accommodation for trainees from February to the end of August.

Rental rates\*\*

**CONTACT** +33 (0)5 65 34 26 71  
[agence.figeac@lot-habitat.com](mailto:agence.figeac@lot-habitat.com)  
[www.lot-habitat.com](http://www.lot-habitat.com)  
Apply for social housing at:  
[www.demande-logement-social.gouv.fr](http://www.demande-logement-social.gouv.fr)

### \*\* Rental information:

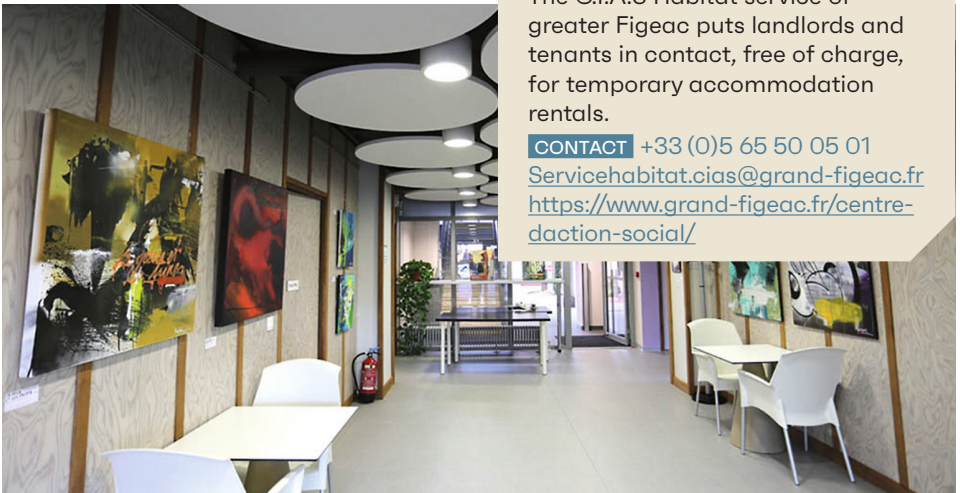
contact the residence / school directly.

## Service Habitat C.I.A.S

8, place Vival 46100 Figeac

The C.I.A.S Habitat service of greater Figeac puts landlords and tenants in contact, free of charge, for temporary accommodation rentals.

**CONTACT** +33 (0)5 65 50 05 01  
[Servicehabitat.cias@grand-figeac.fr](mailto:Servicehabitat.cias@grand-figeac.fr)  
<https://www.grand-figeac.fr/centre-daction-social/>



Résidence Habitat Jeunes Les Soleihos 2



## Centre Universitaire de l'Ariège Robert Naudi

4 Rue Raoul Lafagette, 09 000 Foix

The Montgauzy student residence is located on the Foix university campus. Possibility of accommodation for trainees between April and August

Rent between €225 and €350 including service charges.

Applications are made directly with the university.

**CONTACT** +33 (0)5 61 02 19 80

[logement@centre-universitaire-ariège.fr](mailto:logement@centre-universitaire-ariège.fr)

<http://centre-universitaire-ariège.fr/logement.php>



## Résidence Le Léo de Foix

16 rue Noël Peyrevidal 09 000 Foix

Close to the university campus

Rooms and studios available for students.

Rental rates\*\*

**CONTACT** +33 (0)5 61 65 09 04

[accueil@leodefoix.fr](mailto:accueil@leodefoix.fr)

[www.leodefoix.com](http://www.leodefoix.com)



## Résidence étudiante du Rival

6 Rue du Rival 09 000 Foix

Located in City Center. Furnished rooms & shared spaces. Rent between 250 et 330€ (without service charges)

**CONTACT** +33 (0)5 61 05 80 84 - 07 71 01 19 15

[foiximmobilierconseils@gmail.com](mailto:foiximmobilierconseils@gmail.com)

[www.leodefoix.com](http://www.leodefoix.com)



## Résidence Les Chapeliers

9 rue des Chapeliers 09000 Foix

9 furnished studios, a shared courtyard with a view of the Foix Castle, and a bicycle garage.

The monthly rent is €560 including charges

**CONTACT** +33 (0)6 22 37 21 32

[yoniamouroux@yesss.fr](mailto:yoniamouroux@yesss.fr)

## Accommodation listings and administrative support



## Campus et toits

Campus & Toits is an association that offers shared housing for students and young people under the age of 30 (including those in civic service, working, apprenticeships, or professional training). Everything is done to facilitate access to housing for young individuals: affordable rent, individual lease, eligibility for housing assistance (APL), no guarantor required, simplified application process, and no agency fees. Some accommodations are already equipped and furnished. The best part: at Campus & Toits, roommates can choose each other, and meetings are organized among our tenants. Offers and availability can be found at:

[www.campus-et-toits.fr](http://www.campus-et-toits.fr)

[contact@campus-et-toits.fr](mailto:contact@campus-et-toits.fr)

**CONTACT** +33 (0)7 67 15 79 40

## Info Jeunes Ariège

2 Boulevard François Mitterrand  
09 000 Foix. Offering housing options and shared accommodations for students on the website.

**CONTACT** +33 (0)5 61 02 86 10

[bij09.foix@crij.org](mailto:bij09.foix@crij.org)

[www.infojeunes09.fr](http://www.infojeunes09.fr)

### \*\* Rental information:

contact the residence / school directly.

# Millau

## Résidence Pierre Douzou - Crous

148 boulevard Richard 12100 Millau  
Rent between €323 and 373 including service charges

**CONTACT** +33 (0)5 63 48 16 92  
[residence.pierredouzou@crous-toulouse.fr](mailto:residence.pierredouzou@crous-toulouse.fr)  
[www.crous-toulouse.fr/pierre-douzou](http://www.crous-toulouse.fr/pierre-douzou)

---

## Comité pour le logement des jeunes (CLAJ Rodez)

The CLAJ of Rodez can welcome young people in search of solutions and assist them in their search and administrative procedures in Millau. Check out listings from private individuals on this page»  
<https://clajrodez.org/annonces-millau/>

Contact: 05 65 73 16 32  
[info@claj.org](mailto:info@claj.org)  
<https://claj.org/>



## Office Public de l'Habitat de Millau - OPH Aveyron

23 ter Bd. de la Capelle  
12 104 Millau

**CONTACT** +33 (0)5 65 61 50 70  
[contactmillau@aveyron-habitat.fr](mailto:contactmillau@aveyron-habitat.fr)

## Info Jeunes Aveyron

4 rue Maréchal Leclerc de  
Hauteclouque - 12 000 Rodez

**CONTACT**  
+33 (0)6 30 50 24 19  
[infojeunesaveyron@gmail.com](mailto:infojeunesaveyron@gmail.com)  
<https://www.rij12.fr/page/840851-l-association>

# #explorerlespossibles

**info** Occitanie  
**jeunes**  
EXPLORER LES POSSIBLES



# Montauban



Résidence du Fort - Montauban URHAJ



## Résidence Habitat Jeunes du Fort - URHAJ

5 rue du Fort, 82 000 Montauban

Rental rates\*\*

**CONTACT** +33 (0)5 63 21 26 00

[accueil@lefort.online](mailto:accueil@lefort.online)

[www.residence-du-fort.com](http://www.residence-du-fort.com)



## Résidence Emeraude - SA Patrimoine

30 rue de Gamarra, 82 000 Montauban

For students and young professionals  
Rent between €355 and €405 including service charges.

To apply for social housing: <https://www.demandelogement31.fr/imhowebGP31/>

**CONTACT**

[location@sa-patrimoine.com](mailto:location@sa-patrimoine.com)



*Accommodation listings  
and administrative support*

## Student support - Centre Universitaire du Tarn et Garonne

116 boulevard Montauriol

82 000 Montauban

Consult listings by private landlords.

**CONTACT**

+33 (0)5 63 91 88 77

+33 (0)7 61 22 77 18

[aidealetudiant@tarnetgaronne.fr](mailto:aidealetudiant@tarnetgaronne.fr)

<https://univ.tarnetgaronne.fr/les-logements>

## Info Jeunes Tarn et Garonne Grand Montauban

2 Boulevard Edouard Herriot

82 000 Montauban

Personalised support in finding accommodation and Caf procedures. Listings by private landlords available on the website.

**CONTACT** +33 (0)5 63 66 32 12

[www.sij-montauban.fr](http://www.sij-montauban.fr)



# Rodez

## Résidence Camonil Leclerc

6 rue du Maréchal Leclerc 12 000 Rodez  
Close to Institut Champollion and IUT  
Rental rates\*\*

**CONTACT** +33 (0)5 65 77 14 40

[c.petit@hlm-rodez.fr](mailto:c.petit@hlm-rodez.fr)

[www.crous-toulouse.fr/camonil-leclerc](http://www.crous-toulouse.fr/camonil-leclerc)



## Résidence Habitat Jeunes Cœur de ville - URHAJ

21 rue de Bonald 12 000 Rodez  
Close to IUT and university  
Rent between €250 and €350 including  
service charges

**CONTACT** +33 (0)5 65 77 14 00

[reservation@foyer-sainte-therese.fr](mailto:reservation@foyer-sainte-therese.fr)

[fjt-rodez.wifeo.com](http://fjt-rodez.wifeo.com)



## Résidence Habitat Jeunes Les Capucines - URHAJ

26 boulevard des Capucines 12 850  
Onet-Le-Château  
Rent between €360 and €460 including  
service charges

**CONTACT** +33 (0)5 65 77 51 05

[capucines@hjr.fr](mailto:capucines@hjr.fr)

[www.residence-les-capucines.fr](http://www.residence-les-capucines.fr)



## Foyer Étudiants de la Maison Saint Pierre

Avenue de Saint Pierre, 12 000 Rodez  
Rental rates\*\*

**CONTACT** +33 (0)5 65 68 82 82

[foyeretudiants@gmail.com](mailto:foyeretudiants@gmail.com)

[www.foyeretudiantsrodez.fr](http://www.foyeretudiantsrodez.fr)



## Résidence Universitaire INSPE

12 Rue Sarrus, 12 000 Rodez  
Rental rates\*\*

**CONTACT** +33 (0)5 65 68 03 43

[inspe.savu\\_rodez@univ-tlse2.fr](mailto:inspe.savu_rodez@univ-tlse2.fr)

[https://inspe.univ-toulouse.fr/accueil/  
linspe/sites-de-formation/restauration-  
et-hebergement-sur-le-site-de-rodez-12](https://inspe.univ-toulouse.fr/accueil/linspe/sites-de-formation/restauration-et-hebergement-sur-le-site-de-rodez-12)



### \*\* Rental information:

contact the residence / school directly.

### Mémo pictos



Accessibility



Possibility of  
shared housing



Housing for work /  
study trainees



Possibility of  
short-term stay



## *Social student accommodation*

### **Rodez Agglo Habitat - Housing association**

14 rue de l'Embergue 12 000 Rodez

Provides social housing to students

Thanks to an agreement with the Crous, certain accommodations are provided to grant holders.

Rental rates\*\*

**CONTACT** +33 (0)5 65 77 14 40

[www.rodezagglo-habitat.fr](http://www.rodezagglo-habitat.fr)



Résidence Habitat Jeunes Les Capucines 2 -  
Rodez Onet-Le-Chateau



## *Accommodation listings and administrative support*

### **CLAJ Rodez (Local committee for independent housing for young people)**

4 rue du Maréchal Leclerc de  
Hauteclouque 12 000 Rodez

Information and guidance about  
accommodation for young people.  
Listings by private landlords that  
have all been visited by the associa-  
tion. Administrative support for the  
Caf, Action Logement, etc.

**CONTACT** +33 (0)5 65 73 16 32

[info@clajrodez.org](mailto:info@clajrodez.org)

[www.clajrodez.org](http://www.clajrodez.org)

### **Info Jeunes Aveyron**

4 rue du Maréchal Leclerc 12 000  
Rodez

**CONTACT**

+33 (0)6 30 50 24 19

[lborie.rij12@gmail.com](mailto:lborie.rij12@gmail.com)

[www.rij12.fr](http://www.rij12.fr)

#### **\*\* Rental information:**

contact the residence / school directly.

### *Mémo pictos*



Accessibility



Possibility of  
shared housing



Housing for work /  
study trainees



Possibility of  
short-term stay



# Tarbes



## Résidence Simone Veil - Crous

39 rue Vincent Scotto 65 000 Tarbes

Located in the heart of the university campus. Rent between €247 and 332\* including service charges

**CONTACT** +33 (0)5 62 44 65 65  
[residence.simoneveil@crous-toulouse.fr](mailto:residence.simoneveil@crous-toulouse.fr)  
[www.crous-toulouse.fr/simone-veil](http://www.crous-toulouse.fr/simone-veil)

## Housing associations



## OPH 65 (Office Public de l'Habitat des Hautes-Pyrénées)

28 rue des Haras 65 000 Tarbes

OPH 65 assists students who are looking for accommodation.

Social housing application form can be downloaded online.

Rent between €346 and €540

**CONTACT** +33 (0)7 88 80 18 62  
+33 (0)6 45 11 15 27  
[www.oph65.fr](http://www.oph65.fr)

## La SEMI (Société d'Économie Mixte de Construction de la Ville de Tarbes)

29 rue Georges Clémenceau 65 000 Tarbes

### Résidence Bastillac Université

76 avenue d'Azereix 65000 Tarbes

### Résidence Carline

10 avenue de l'Echez 65 000 Tarbes

Application form can be collected from reception. Rental rates\*\*

**CONTACT** +33 (0)5 62 51 78 51  
[elise.maumus@semi-tarbes.fr](mailto:elise.maumus@semi-tarbes.fr)  
[www.semi-tarbes.fr](http://www.semi-tarbes.fr)



## Résidence Atrium - URHAJ

88 rue Alsace Lorraine 65 000 Tarbes

Rental rates\*\*

**CONTACT** +33 (0)5 62 38 91 20  
[accueil@fjt-tarbes.fr](mailto:accueil@fjt-tarbes.fr)  
[www.fjt-tarbes.fr](http://www.fjt-tarbes.fr)



## Other useful contacts

### Tarbes Youth Information Office

3, rue Colomès de Juillan 65 000 Tarbes

Online listings by private landlords, and presentation of student housing options.

**CONTACT** +33 (0)5 62 93 22 12  
[bij@mairie-tarbes.fr](mailto:bij@mairie-tarbes.fr)  
[logement-etudiant-65.site123.me](http://logement-etudiant-65.site123.me)

### ADIL 65 (Departmental Agency for Housing Information)

24 Rue Larrey 65 000 Tarbes

Advice and support for all aspects of housing, whether legal, financial or tax-related.

**CONTACT** +33 (0)5 62 34 67 11  
[adil.65@orange.fr](mailto:adil.65@orange.fr)  
[www.adil65.org](http://www.adil65.org)  
Telephone contact only

# Toulouse

## *On the Université Toulouse Capitole campus and TBS*



### **Résidence les jardins de l'Université - Crous**

31, rue Valade 31000 Toulouse  
(Capitole / Compans-Caffarelli area)  
Rent between €245 and 258\* including service charges

**CONTACT** +33 (0)5 62 25 62 28  
[residence.jardins@crous-toulouse.fr](mailto:residence.jardins@crous-toulouse.fr)  
<https://www.crous-toulouse.fr/logement/les-jardins-de-luniversite/>



### **Résidence Arsenal - Crous**

2 boulevard Armand Duportal 31070 Toulouse (Capitole / Compans area)  
Rent between €256 and 377\* including service charges

**CONTACT** +33 (0)5 62 25 62 28  
[residence.arsenal@crous-toulouse.fr](mailto:residence.arsenal@crous-toulouse.fr)  
[www.crous-toulouse.fr/arsenal](http://www.crous-toulouse.fr/arsenal)

## *Close to Université Toulouse Capitole campus, TBS and Toulouse-INP ENSEIHT*



### **Résidence Chapou - Crous**

1 rue Saunière 31069 Toulouse (Amidonniens area)  
Rent between €256 and €297\* including service charges

**CONTACT** +33 (0)5 61 12 55 26  
[residence.chapou@crous-toulouse.fr](mailto:residence.chapou@crous-toulouse.fr)  
[www.crous-toulouse.fr/chapou](http://www.crous-toulouse.fr/chapou)



### **Résidence Armand Duportal - Crous**

1 rue de la cité administrative 31000 Toulouse (Capitole / Compans area)  
Monthly rent is between €344 and €405 including service charges

**CONTACT** +33 (0)5 61 12 63 11  
[residence.duportal@crous-toulouse.fr](mailto:residence.duportal@crous-toulouse.fr)  
<https://www.crous-toulouse.fr/logement/armand-duportal/>



### **Résidence Capitaine Philippe - Crous**

1 rue Saunière 31069 Toulouse (Amidonniens area)  
Rent between €331 and €356\* including service charges

**CONTACT** +33 (0)5 61 12 55 26  
[residence.capitainephilippe@crous-toulouse.fr](mailto:residence.capitainephilippe@crous-toulouse.fr)  
[www.crous-toulouse.fr/capitaine-philippe](http://www.crous-toulouse.fr/capitaine-philippe)



### **Résidence L'Aérophile - Crous**

4 rue Pierre Laplace 31000 Toulouse (Compans-Caffarelli area)  
Rent between €340 and €662\* including service charges

**CONTACT** +33 (0)5 62 25 62 43  
[residence.laerophile@crous-toulouse.fr](mailto:residence.laerophile@crous-toulouse.fr)  
[www.crous-toulouse.fr/laerophile](http://www.crous-toulouse.fr/laerophile)



## Résidence Taur - Crous

6 rue Bellegarde 31000 Toulouse  
(quartier Capitole)

Rent between €256 and €384\* including  
service charges

**CONTACT** +33 (0)5 62 25 62 28  
[residence.taur@crous-toulouse.fr](mailto:residence.taur@crous-toulouse.fr)  
[www.crous-toulouse.fr/taur](http://www.crous-toulouse.fr/taur)



## Résidence Larrey - Crous

17 bis rue Larrey 31000 Toulouse (Saint-  
Pierre / Compans-Caffarelli area)

Rent between €215 and €368\* including  
service charges

**CONTACT** +33 (0)5 62 25 62 41  
[residence.larrey@crous-toulouse.fr](mailto:residence.larrey@crous-toulouse.fr)  
[www.crous-toulouse.fr/larrey](http://www.crous-toulouse.fr/larrey)



## Résidence Castelbou - Promologis

22 rue Léonce Castelbou 31000  
Toulouse (Compans-Caffarelli area)

Rent between €640 and 785\* including  
service charges

**CONTACT** +33 (0)9 70 82 84 60  
[contact-castelbou@promologis.fr](mailto:contact-castelbou@promologis.fr)  
[www.promologis.fr](http://www.promologis.fr)



## Cité Internationale des Chercheurs

17 rue Sainte-Catherine 31400 Toulouse  
(Close to Saint-Pierre area)

Monthly rent between €322 and €566

**CONTACT**  
Application form can be downloaded  
online:  
[www.citeinternationale-toulouse.fr/www.oh-monappartetudiant.fr](http://www.citeinternationale-toulouse.fr/www.oh-monappartetudiant.fr)



## Résidence L'Annexe -

### Les Chalets / Oh ! Mon Appart

rue Edmond de Planet 31000 Toulouse  
(Close to Saint-Pierre area)

Rent between €300 and €661 excluding  
service charges

**CONTACT**  
[contact@oh-monappartetudiant.fr](mailto:contact@oh-monappartetudiant.fr)  
[www.oh-monappartetudiant.fr](http://www.oh-monappartetudiant.fr)

## Résidence Anatole France Habitat Jeunes Ô Toulouse - URHAJ

42 place Anatole France 31000  
Toulouse (Capitole / Compans-  
Caffarelli area)

Rent between €343.50 and €520.80  
excluding service charges

**CONTACT** +33 (0)5 61 52 41 34  
[accueil.esperance@otoulouse.org](mailto:accueil.esperance@otoulouse.org)  
[www.otoulouse.org](http://www.otoulouse.org)

### Mémo pictos



Accessibility



Possibility of  
shared housing



Housing for work /  
study trainees



Possibility of  
short-term stay



Toul'box partner

\* **Besides shared flat, housing for families  
and couples.**

## Toulouse

Close to Université Toulouse Capitole campus, TBS and Toulouse-INP ENSECHT

### Résidence Espérance Habitat Jeunes Ô Toulouse - URHAJ

20 grande rue Nazareth 31000 Toulouse (Carmes area)

Rent between €375.60 and €511.20 excluding service charges

**CONTACT** +33 (0)5 61 52 41 34

[accueil.esperance@otoulouse.org](mailto:accueil.esperance@otoulouse.org)

[www.otoulouse.org](http://www.otoulouse.org)



### Résidence Le Fidelio - Toulouse Métropole Habitat

5-7 Rue du Port Saint-Etienne, 31000 Toulouse (François Verdier area)

Rent between €283 and €640 including service charges

**CONTACT** +33 (0)5 67 69 67 69

[logementsfidelio@tm-habitat.fr](mailto:logementsfidelio@tm-habitat.fr)

[www.toulouse-metropole-habitat.fr/toulouse-metropole-habitat/notre-patrimoine/le-fidelio](http://www.toulouse-metropole-habitat.fr/toulouse-metropole-habitat/notre-patrimoine/le-fidelio)

To apply for social housing: <https://www.demandelogement31.fr/imhowebGP31/>

### Résidence La Coulée Verte - Crous

31 rue Dinotard 31500 Toulouse

(Jolimont / Roseraie / Argoulets area)

Rent between €386 and €411\* including service charges

**CONTACT** +33 (0)5 61 29 23 86

[residence.lacouleeverte@crous-toulouse.fr](mailto:residence.lacouleeverte@crous-toulouse.fr)

[www.crous-toulouse.fr/la-coulee-verte](http://www.crous-toulouse.fr/la-coulee-verte)



### Résidence Jolimont - Habitat Jeunes Ô Toulouse (URHAJ)

2, avenue Yves Brunaud 31500 Toulouse (Jolimont area)

Rent between €364.80 and €535.80 excluding service charges

**CONTACT** +33 (0)5 34 30 42 80

[www.otoulouse.org/logement/residence-jolimont-2](http://www.otoulouse.org/logement/residence-jolimont-2)

### Résidence Pierre Garrigues - Crous

77, rue Saint Jean 31130 Balma

Rent between € 372 and €405\* including service charges

**CONTACT** +33 (0)7 84 34 72 78

[residence.pierregarrigues@crous-](mailto:residence.pierregarrigues@crous-toulouse.fr)

[toulouse.fr](mailto:residence.pierregarrigues@crous-toulouse.fr)

[www.crous-toulouse.fr/pierre-garrigues](http://www.crous-toulouse.fr/pierre-garrigues)

### Résidence Marc Chagall - Cité Jardin

10 rue Marc Chagall, 31700 Blagnac

Close to IUT in Blagnac

For students and young professionals

Rental rates\*\*

**CONTACT** +33 (0)5 62 25 62 00

[v.bucco@lacitejardins.fr](mailto:v.bucco@lacitejardins.fr)

[j.brosed@lacitejardins.fr](mailto:j.brosed@lacitejardins.fr)

[www.crous-toulouse.fr/marc-chagall](http://www.crous-toulouse.fr/marc-chagall)

### Résidence Constellation - URHAJ

10 rue Louis Blériot 31700 Blagnac

Rental rates\*\*

**CONTACT** +33 (0)5 61 59 62 70

[rjh.constellation@anras.fr](mailto:rjh.constellation@anras.fr)

<https://www.habitatjeunesoccitanie.org/logement/residence-constellation>



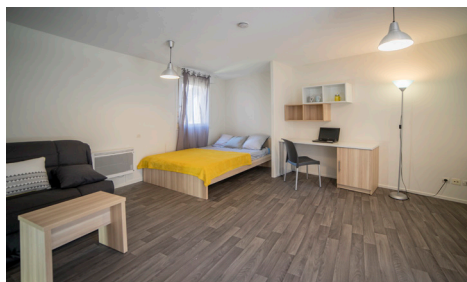
## Résidence Les Triades - Promologis

12 rue de Périole 31500 Toulouse  
(Marengo / Jean Jaurès area)  
Rent between €550 and €680 including  
service charges other than EDF

**CONTACT** +33 (0)9 70 82 84 60

[contact-triades@promologis.fr](mailto:contact-triades@promologis.fr)

[www.promologis.fr](http://www.promologis.fr)



Résidence Les Triades - Promologis

## Résidence ST-Exupéry - URHAJ

2 allées de Gramont 31130 Balma  
Monthly rate is between €345 and €505  
including service charges  
+ €25 of collective charges

**CONTACT** +33 (0)7 88 83 47 98

[rhj.saintexupery@anras.fr](mailto:rhj.saintexupery@anras.fr)

[https://www.habitatjeunesoccitanie.org/  
logement/residence-st-exupery](https://www.habitatjeunesoccitanie.org/logement/residence-st-exupery)



Résidence St-Exupéry - URHAJ

*Close to Rangueil campus, Université Toulouse III - Paul Sabatier,  
ISAE-SUPAERO, ENAC and INSA*



## Résidence Maryse Bastié - Crous

118 route de Narbonne 31077 Toulouse  
(Rangueil area)  
Rent between €388 and €650\* including  
service charges

**CONTACT** +33 (0)05 62 25 62 00

[residence.marysebastie@crous-toulouse.fr](mailto:residence.marysebastie@crous-toulouse.fr)

[www.crous-toulouse.fr/maryse-bastie](http://www.crous-toulouse.fr/maryse-bastie)



## Résidence Les Intégrales - Crous

118 route de Narbonne 31077 Toulouse  
(Rangueil area)  
Rent between €240 and €542\* including  
service charges

**CONTACT** +33 (0)5 62 25 62 00

[residence.lesintegrales@crous-toulouse.fr](mailto:residence.lesintegrales@crous-toulouse.fr)

[www.crous-toulouse.fr/les-integrales](http://www.crous-toulouse.fr/les-integrales)



## Résidence Clément Ader - Crous

118 route de Narbonne 31077 Toulouse  
(Rangueil area)  
Rent between €352 and €692\* including  
service charges

488€ for smart home accessible rooms  
with services for people with reduced  
mobility ([contact](#) the social service to  
submit an application)

**CONTACT** +33 (0)5 62 25 62 30

[residence.clementader@crous-toulouse.fr](mailto:residence.clementader@crous-toulouse.fr)

[www.crous-toulouse.fr/clement-ader](http://www.crous-toulouse.fr/clement-ader)



## Résidence Latécoère - Crous

6 allées du Lieutenant Lucien Lafay  
31077 Toulouse (Rangueil area)  
Rent between €303 and €334\* including  
service charges

**CONTACT** +33 (0)5 62 25 62 00

[residence.latecoere@crous-toulouse.fr](mailto:residence.latecoere@crous-toulouse.fr)

[www.crous-toulouse.fr/latecoere](http://www.crous-toulouse.fr/latecoere)

## Toulouse

Close to Rangueil campus, Université Toulouse III - Paul Sabatier, ISAE-SUPAERO, ENAC and INSA



### Résidence Colonel Roche - Crous

15 avenue du Colonel Roche 31400

Toulouse (Rangueil area)

Rent between €385 and €459\* including service charges

**CONTACT** +33 (0)5 61 12 55 70

[residence.colonelroche@crous-toulouse.fr](mailto:residence.colonelroche@crous-toulouse.fr)

[www.crous-toulouse.fr/colonel-roche](http://www.crous-toulouse.fr/colonel-roche)



### Résidence INSA - Crous

135, avenue de Rangueil 31077 Toulouse

Rent between €217 and €393 including service charges

**CONTACT** +33 (0)5 61 55 99 44

[residence.insa@crous-toulouse.fr](mailto:residence.insa@crous-toulouse.fr)

<https://www.crous-toulouse.fr/logement/insa/>



### Résidence Thalès - Crous

118, route de Narbonne 31077 Toulouse (quartier Rangueil)

Rent between €286 and €514\* including service charges

**CONTACT** +33 (0)5 62 25 62 00

[residence.thales@crous-toulouse.fr](mailto:residence.thales@crous-toulouse.fr)

[www.crous-toulouse.fr/thales](http://www.crous-toulouse.fr/thales)

### Résidence Pythagore - Crous

118, route de Narbonne 31077 Toulouse (quartier Rangueil)

Rent between €327 and €776\* including service charges

**CONTACT** +33 (0)5 62 25 60 30

[residence.pythagore@crous-toulouse.fr](mailto:residence.pythagore@crous-toulouse.fr)

[www.crous-toulouse.fr/pythagore](http://www.crous-toulouse.fr/pythagore)

\* **Student rate\*\***

## Résidence Les Tripodes (Archimède, Bichat, Curie) - Crous

118, route de Narbonne 31077 Toulouse (Rangueil area)

Rent between €256 and €297\* including service charges

**CONTACT** +33 (0)5 62 25 62 00

+33 (0)5 62 25 60 14

[hebergement.rangueil@crous-toulouse.fr](mailto:hebergement.rangueil@crous-toulouse.fr)

[https://www.crous-toulouse.fr/?s=tripodes&post\\_type=logement](https://www.crous-toulouse.fr/?s=tripodes&post_type=logement)



### Résidences INSA - Promologis

4, 6, 8, 10, allée des Sciences appliquées

141, avenue de Rangueil

17, avenue du Colonel Roche

31400 Toulouse (Rangueil / Ponsan-Bellevue area)

Rent between €440 and €750 including service charges

**CONTACT** +33 (0)9 70 82 84 60

[a.insa@promologis.fr](mailto:a.insa@promologis.fr)

[www.promologis.fr](http://www.promologis.fr)

### Résidence Olympe de Gougues - Crous

35 rue Maurice Bécane 31078

Toulouse (Rangueil area)

Rent between €332 and €553\* including service charges

**CONTACT** +33 (0)5 62 25 62 62

[residence.olympedegougues@crous-toulouse.fr](mailto:residence.olympedegougues@crous-toulouse.fr)

[crous-toulouse.fr/olymp-de-gougues](http://crous-toulouse.fr/olymp-de-gougues)

## Mémo pictos



Accessibility



Housing for work / study trainees



Toul'box partner



Possibility of shared housing  
Possibility of short-term stay





À la recherche  
d'un **appart de qualité** en **centre-ville** ?  
**Toulouse Métropole Habitat**  
est là pour vous !

RÉSIDENCE **FIDÉLIO**  
À TOULOUSE,  
PROCHE PLACE DUPUY

LE **BON PLAN**  
LOCATION  
**ÉTUDIANTS  
JEUNES  
ACTIFS**

du **T1 au T3** en coloc'  
T1 à partir de **269€\***  
\* Loyers mensuel provisionnel  
charges comprises.

**Contactez-nous vite !**

05 67 69 67 69  
logementsfidelio@tm-habitat.fr  
www.toulouse-metropole-habitat.fr

**Toulouse métropole  
HABITAT**  
Office Public du Logement de la Métropole toulousaine

COM-M2 Toulouse 4 2016 001 700 201 004 445 - 19 rue de la République



## Résidence Paul Voivenel 1 & 2 - Crous

35, rue Maurice Bécane 31078 Toulouse  
(Rangueil / Ponsan-Bellevue area)  
Rent between €366 and €463\* including  
service charges

**CONTACT** +33 (0)5 62 25 62 62  
[residence.paulvoivenel@crous-toulouse.fr](mailto:residence.paulvoivenel@crous-toulouse.fr)  
[www.crous-toulouse.fr/paul-voivenel](http://www.crous-toulouse.fr/paul-voivenel)  
[https://www.crous-toulouse.fr/logement/  
paul-voivenel-1/](https://www.crous-toulouse.fr/logement/paul-voivenel-1/)

## Résidence At'Ome - Crous

35 rue Maurice Bécane 31078 Toulouse  
(Rangueil / Ponsan-Bellevue area)  
Rent between €348 and €379\* including  
service charges

**CONTACT** +33 (0)5 62 25 62 62  
[residence.atome@crous-toulouse.fr](mailto:residence.atome@crous-toulouse.fr)  
[www.crous-toulouse.fr/atome](http://www.crous-toulouse.fr/atome)



## Résidence Parc Bellevue - Crous

3 avenue du Professeur Duing  
31400 Toulouse (Rangueil area)  
Rent between €218 and €303\* including  
service charges

**CONTACT** +33 (0)5 62 25 62 75  
[residence.parcbellevue@crous-toulouse.fr](mailto:residence.parcbellevue@crous-toulouse.fr)  
[www.crous-toulouse.fr/parc-bellevue](http://www.crous-toulouse.fr/parc-bellevue)

## Résidence Jacqueline Auriol - Crous

6 mail Françoise Dolto 31520  
Ramonville-Saint-Agne  
Rent between €387 and €397\* including  
service charges

**CONTACT** +33 (0)5 62 25 62 60  
[residence.jacquelineauriol@crous-toulouse.fr](mailto:residence.jacquelineauriol@crous-toulouse.fr)  
[www.crous-toulouse.fr/jacqueline-auriol](http://www.crous-toulouse.fr/jacqueline-auriol)

## Toulouse

*Close to Rangueil campus, University of Toulouse 3 Paul Sabatier, ISAE-SUPAERO, ENAC and INSA*

### Résidence Notre-Dame - Crous

12 rue Notre-Dame 31400 Toulouse  
(Saint-Michel area)

Rent €322 to €669\*charges inc.

**CONTACT** +33 (0)5 61 12 55 37

[residence.notredame@crous-toulouse.fr](mailto:residence.notredame@crous-toulouse.fr)

[www.crous-toulouse.fr/notre-dame](http://www.crous-toulouse.fr/notre-dame)



### Résidence Daniel Faucher - Crous

11 allée du Professeur Camille Soula  
31078 Toulouse (Ile du Ramier area)

Rent €259 to €427\* charges inc.

**CONTACT** +33 (0)5 61 12 55 37

[residence.danielfaucher@crous-toulouse.fr](mailto:residence.danielfaucher@crous-toulouse.fr)

[www.crous-toulouse.fr/daniel-faucher](http://www.crous-toulouse.fr/daniel-faucher)



### Résidence Cap Juby / Oh ! Mon Appart

5 rue Pierre Deley 31400 Toulouse  
(Montaudran area)

Possibility of shared housing

Rent €293 to €443 excluding service charges

**CONTACT**

[contact@oh-monappartetudiant.fr](mailto:contact@oh-monappartetudiant.fr)

[www.oh-monappartetudiant.fr](http://www.oh-monappartetudiant.fr)



### Résidence Patagonia Montaudran - Oh ! Mon Appart

Rue Jacqueline Auriol 31400 Toulouse  
(Montaudran area). Rent between €293 and €666 excluding service charges

**CONTACT**

[contact@oh-monappartetudiant.fr](mailto:contact@oh-monappartetudiant.fr)

[www.oh-monappartetudiant.fr](http://www.oh-monappartetudiant.fr)



### Résidence les Roses - Groupe Les Chalets

54 rue des Roseaux 31400 Toulouse  
(Rangueil area). Rent between €180 and €605 excluding service charges

**CONTACT**

[contact@oh-monappartetudiant.fr](mailto:contact@oh-monappartetudiant.fr)

[www.oh-monappartetudiant.fr](http://www.oh-monappartetudiant.fr)



### Résidence ISAE - ALTEAL

4 avenue Edouard Belin 31400 Toulouse  
(Rangueil area). Priority given to ISAE-SUPAERO. Room starting at €333/month

**CONTACT** +33 (0)5 32 11 05 50

[isae@alteal.net](mailto:isae@alteal.net)

<https://xn--altal-dsa.fr/logements-etudiants/mon-futur-logement/>



### Résidence Blaise Pascal - ALTEAL

150 avenue de Lespinet 31400 Toulouse  
(Montaudran area)

Room starting at 375€/month

**CONTACT** +33 (0)7 61 68 53 65

[blaisepascal@alteal.net](mailto:blaisepascal@alteal.net)

<https://xn--altal-dsa.fr/logements-etudiants/mon-futur-logement/>



### Résidence Demoiselles - URHAJ

70 allées des demoiselles 31400, Toulouse  
(Saint Michel area)

Rental rates\*\*

**CONTACT** +33 (0)5 34 30 42 80

[demoiselles@otoulouse.org](mailto:demoiselles@otoulouse.org)

<http://www.otoulouse.org/logement/residence-demoiselles-2/>



## Close to Toulouse-INP ENSAT, ENSFEA, TBS (Enova site) and Rangueil campus



### Résidence Pont de bois - Promologis

15 allée Ville Tarn 31320 Auzeville-Tolosane. Rent between €495 and €850 including service charges

**CONTACT** +33 (0)9 70 82 84 60  
[contact-pontdebois@promologis.fr](mailto:contact-pontdebois@promologis.fr)  
[www.promologis.fr](http://www.promologis.fr)



### Résidence Rachel Carson - Crous

Avenue de l'Agrobiopole 31320 Auzeville-Tolosane  
Rent between €345 and €508 including service charges

**CONTACT** +33 (0)5 62 25 62 15  
[esidence.rachelcarson@crous-toulouse.fr](mailto:esidence.rachelcarson@crous-toulouse.fr)  
[www.crous-toulouse.fr/rachel-carson](http://www.crous-toulouse.fr/rachel-carson)



### Résidence Le Colombier Labège - ALTEAL

395 rue du Colombier 31760 Labège (Enova Campus)  
Co-renting not permitted but students can live as a couple if they so wish  
Room starting at 398€/month including service charges

**CONTACT** +33 (0)5 34 31 82 50  
[colombier@alteal.net](mailto:colombier@alteal.net)  
[www.alteal.fr/locations/residence-le-colombier.l36.php](http://www.alteal.fr/locations/residence-le-colombier.l36.php)

### Résidence Orion - Promologis

60 Rue des Tours, 31670 Labège (Enova Campus)

Monthly rent is between €405 and €530 including service charges (except EDF)

**CONTACT** 0970828460  
+ <http://www.promologis.fr/>



### Résidence Horizon 172 Labège - ALTEAL

172 rue Charles Bourseul 31670 Labège (Enova Campus)  
Room starting at 401€/month including service charges

**CONTACT** +33 (0)6 49 85 27 38  
<https://xn--altal-dsa.fr/logements-etudiants/mon-futur-logement/>

### Résidence Habitat Jeune @ Home (URHAJ)

172 rue Charles Bourseul 31670 Labège (Enova Campus)  
Rent between €468 and €543.60 excluding service charges

**CONTACT**  
[athome@otoulouse.org](mailto:athome@otoulouse.org)  
[www.otoulouse.org/logement/residence-home](http://www.otoulouse.org/logement/residence-home)



### Résidence Ariane - Patrimoine SA

34 avenue Mercure 31130 Quint-Fonsegrives  
Mixed-use residence for students and young professionals  
Rental rates\*\*

**CONTACT**  
Application form can be downloaded online : <https://www.demandelogement31.fr/imhowebGP31/pages/31/votre-demande-de-logement.html>

\* **Student rate\***

\*\* **Rental information:**

contact the residence / school directly.

*Close to Mirail campus, Université Toulouse - Jean Jaurès,  
ENSA de Toulouse, ENVT, ICAM, CHU Purpan*



## Résidences Les Humanités 1 & 2 - Crous

5 allées Antonio Machado 31000  
Toulouse cedex 9

\*\*Rental rates between €325 and €667\*  
including service charges

**CONTACT** +33 (0)5 61 12 55 20  
[residence.humanites@crous-toulouse.fr](mailto:residence.humanites@crous-toulouse.fr)  
[www.crous-toulouse.fr/les-humanites](http://www.crous-toulouse.fr/les-humanites)



## Résidence Constantinople - Oh ! Mon Appart

4 rue Ferdinand Laulanié 31100 Toulouse  
Rent between €282 and €626 excluding  
service charges

**CONTACT**  
[contact@oh-monappartetudiant.fr](mailto:contact@oh-monappartetudiant.fr)  
[www.oh-monappartetudiant.fr](http://www.oh-monappartetudiant.fr)



## Résidence Jean Gilles - Patrimoine SA

8, rue Jean Gilles 31100 Toulouse  
(Reynerie area)  
Rental rates\*\*

**CONTACT** Application form can be  
downloaded online : [https://www.demandelogement31.fr/imhowebGP31/  
pages/31/votre-demande-de-logement.  
html?](https://www.demandelogement31.fr/imhowebGP31/pages/31/votre-demande-de-logement.html)

## Résidence Badiou - URHAJ

13 avenue Badiou 31300 Toulouse  
Rental rates\*\*

**CONTACT** +33 (0)5 62 14 95 00  
[accueil.sanfrancisco@ucrm.fr](mailto:accueil.sanfrancisco@ucrm.fr)



## Résidence JUMP Oh ! Mon Appart

10 rue Rochefort 31100 Toulouse  
(Fontaine Lestang area). Rent between  
€326 and €512 excluding service charges

**CONTACT**  
[contact@oh-monappartetudiant.fr](mailto:contact@oh-monappartetudiant.fr)  
[www.oh-monappartetudiant.fr](http://www.oh-monappartetudiant.fr)



## Résidence Aragon - Oh ! Mon Appart

6 rue du 11 novembre 1918 31100  
Toulouse (Arènes area). Rent between  
€278 and €500 excluding service charges

**CONTACT**  
[contact@oh-monappartetudiant.fr](mailto:contact@oh-monappartetudiant.fr)  
[www.oh-monappartetudiant.fr](http://www.oh-monappartetudiant.fr)



## Résidence Apollinaire - Oh ! Mon Appart

4 place Agapito Nadal 31100 Toulouse  
(Arènes area). Rent between €240 and  
€308 excluding service charges

**CONTACT**  
[contact@oh-monappartetudiant.fr](mailto:contact@oh-monappartetudiant.fr)  
[www.oh-monappartetudiant.fr](http://www.oh-monappartetudiant.fr)



## Résidence de l'Ecole Vétérinaire (ENVT) - Oh ! Mon Appart

51 Chemin des Capelles 31300 Toulouse  
(Lardenne area)  
Accommodation reserved for ENVT  
students. Rental rates\*\*

**CONTACT**  
[contact@oh-monappartetudiant.fr](mailto:contact@oh-monappartetudiant.fr)



## INTERNET



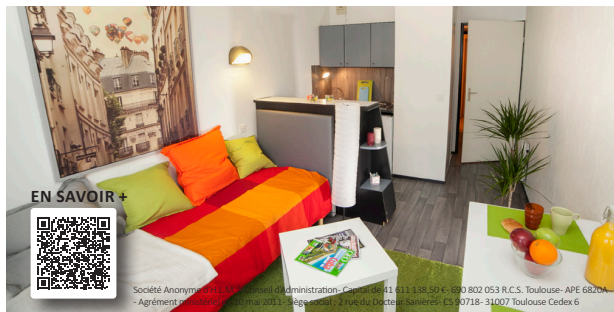
## SALLE DE SPORT



**LAVERIE  
SUR PLACE**



**SANS FRAIS  
D'AGENCE**



## TOULOUSE

**LABÈGE**

## AUZEVILLE

**promologis.fr**



### Résidence à proximité du CVRH - Crous

6 Imp. Paul Mesplé, 31100 Toulouse  
(quartier Bellefontaine / Les Pradettes)  
Monthly rent is between €282 and  
€353\* including service charges

**CONTACT** +33 (0)5 61 12 55 20

[residence.humanites@crous-toulouse.fr](mailto:residence.humanites@crous-toulouse.fr)  
<https://www.crous-toulouse.fr/logement/residence-cvrrh/>



## Résidence Habitat Jeunes San Francisco - URHAJ

92 route d'Espagne 31 100 Toulouse  
(Croix de Pierre area)

Application forms can be picked up on site. Rental rates\*\*

**CONTACT** +33 (0)5 61 43 23 00

[accueil.sanfransisco@ucrm.fr](mailto:accueil.sanfransisco@ucrm.fr)  
[habitatjeunes.ucrm.fr](http://habitatjeunes.ucrm.fr)

## Résidence Déodat de Séverac - Crous

167 avenue de Muret 31300 Toulouse  
(quartier Les Arènes / Patte d'oie)  
Monthly rent is between 357€ à 520 €  
including service charges

**CONTACT** +33 (0)5 62 25 62 14

[residence.deodat@crous-toulouse.fr](mailto:residence.deodat@crous-toulouse.fr)  
<https://www.crous-toulouse.fr/logement/residence-deodat-de-severac/>

**Résidence Habitat Jeunes  
Anadyr - URHAJ**

108 route d'Espagne 31 100 Toulouse  
(Croix de Pierre area)

Application forms can be picked up on site. Rental rates\*\*

**CONTACT** +33 (0)5 61 43 23 00

[accueil.sanfransisco@ucrm.fr](mailto:accueil.sanfransisco@ucrm.fr)  
[habitatjeunes.ucrm.fr](http://habitatjeunes.ucrm.fr)

\* Student rate\*

**\*\* Rental information:**

contact the residence / school directly.



## Other housing options in Toulouse:

### Private landlords



**For websites with accommodation listings, see p16**

You can also contact your school's student welfare department!

Université Toulouse III - Paul Sabatier students can check listings of accommodation near the campus at:

<https://univ-tlse3.studapart.com/fr/>

### Intergenerational housesharing

Several associations offer international housing which offer intergenerational housing:

#### **Mieux Ensemble**

There are two addresses where you can find them: La Mijoteuse (space for social & solidarity economy), place Joseph Versaille 31770 Colomiers

**CONTACT** Ghislaine Blanchard  
+33 (0)6 95 01 09 47  
[mieuxensemble.toulouse@gmail.com](mailto:mieuxensemble.toulouse@gmail.com)  
[www.mieuxensemble-toulouse.fr](http://www.mieuxensemble-toulouse.fr)

#### **Ensemble 2 Générations**

Open by appointment on Mondays, Tuesdays and Thursdays from 9:30 am to 4:00 pm

22 rue Déodora 31400 Toulouse

**CONTACT** +33 (0)6 20 75 17 97  
[toulouse@ensemble2generations.fr](mailto:toulouse@ensemble2generations.fr)  
[www.ensemble2generations.fr](http://www.ensemble2generations.fr)

### Shared housing in Toulouse



**For websites with shared housing listings, see 18**

#### **Shared housing with the KAPS solidarity project**

AFEV Toulouse, the "association of students for the city foundation", offers places in so-called "KAPS", or "solidarity flatsharing projects".

Crous residence «Le petit Varèse» is a 3-minute walk from Université Toulouse - Jean Jaurès and 15 minutes from the city centre (Metro Line A, Mirail University station).

> Average rent €270 including utilities and service charges

> 5 hours of citizen commitment per week

Living in a KAPS means being involved in an innovative project and in actions with residents and partners based on different themes (education, environment, culture, sport).

Interested? You can find more information on their website and request to be contacted!

[toulouseafev.wixsite.com/afev/kolocations-a-projets-solidaires](http://toulouseafev.wixsite.com/afev/kolocations-a-projets-solidaires)

#### **Campus & toits**

Campus & Toits is an association that offers shared housing for students and young people under the age of 30 (including those in civic service, working, apprenticeships, or professional training). Everything is done to facilitate access to housing for young

individuals: affordable rent, individual lease, eligible for housing assistance (APL), no guarantor required, simplified application process, and no agency fees. Some accommodations are already equipped and furnished. The unique feature of Campus & Toits is that roommates can choose each other, and meetings are organized among our tenants.

Offers and availability can be found at: [www.campus-et-toits.fr](http://www.campus-et-toits.fr)  
[contact@campus-et-toits.fr](mailto:contact@campus-et-toits.fr)  
+33 (0)7 67 15 79 40

## Host families

Association Accueil en Région  
Toulousaine

[www.accueiltoulouse.com](http://www.accueiltoulouse.com)

L'Association ActIF

[www.ac-tif.fr/fr](http://www.ac-tif.fr/fr)



## *Information points and useful contacts in Toulouse*

### **Accueil-Welcome Desk**

41 allées Jules Guesde, allée Matilda  
31000 Toulouse

Metro Line B - Carmes  
or Palais de Justice

Provides guidance in finding accommodation and directs you to the best point of contact according to your needs.

#### **CONTACT**

[welcomedesk@univ-toulouse.fr](mailto:welcomedesk@univ-toulouse.fr)  
[welcomedesk.univ-toulouse.fr](http://welcomedesk.univ-toulouse.fr)

Opening hours : Monday to Friday from  
9:00 am to 12:30 pm & 1:30 pm to 5:00  
pm (6:00 during september)

#### Caf for students

(at the Welcome Desk)

Caf office exclusively for students where they can get information about housing benefits and the employment premium, and apply online.

### Crous open by appointment

Support for any issues related to grants, housing, benefits, student jobs, and cultural / campus activities.

[www.crous-toulouse.fr/lecrous/contacts](http://www.crous-toulouse.fr/lecrous/contacts)

### **Info Jeunes Occitanie**

17 Rue de Metz 31000 Toulouse

M line A - Esquirol. Opening hours :

Monday from 13.30 to 18.00 // From  
Tuesday to Friday : from 10 to 12.30/  
and 13.30 to 18h

The Crij informs and assists young people with their rights and procedures when it comes to housing.

Service "Support for Rights and Demands": by appointment on Tuesdays and Thursdays from 1:30 pm to 5:00 pm.

**CONTACT** 05 61 21 20 20

[www.crij.org](http://www.crij.org)

## **L'Espace Case - Crous**

58 rue du Taur 31000 Toulouse

Metro Line A - Capitole /

Metro line B - Jeanne d'Arc station

Opening hours: 9:00 am - 4:00 pm

Monday - Friday (by appointment)

For any questions related to grants, housing, benefits, student jobs, and cultural activities and campus life.

Opening hours may vary due to activity.

<https://www.crous-toulouse.fr/contacts/>

## **ADIL 31**

**Departmental Agency for Housing Information**

4 rue Furgole 31000 Toulouse

Metro Line B - Carmes

or Palais de justice

Adil provides free advice on legal and financial matters related to housing.

**CONTACT** +33 (0)5 61 22 46 22

[info@adil31.org](mailto:info@adil31.org)

[www.adil31.org](http://www.adil31.org)

## **CLLAJ 31**

**Local committee for independent housing for young people**

169 avenue de Muret, 31300 Toulouse

Housing application forms, active search tools, guidance and information on tenants' rights.

Appointments at Info Jeunes Occitanie.

**CONTACT** +33 (0)5 61 21 20 20

[contact-cllaj31@ajh.fr](mailto:contact-cllaj31@ajh.fr)

[www.cllaj31.org/](http://www.cllaj31.org/)

## **Toulouse City Council**

**Community Health Service (SCHS)**

17 place de la Daurade 31000 Toulouse

"No more unsafe housing":

accommodation is considered to be substandard, unsanitary, inadequate or unsafe if it presents risks to the health and / or safety of its occupants.

**CONTACT** +33 (0)5 61 22 23 32

[hygiene@mairie-toulouse.fr](mailto:hygiene@mairie-toulouse.fr)

<https://metropole.toulouse.fr/demarches/>

[signaler-un-habitat-insalubre](#)

**Direction des Solidarités et de la Cohésion sociale (Social Cohesion Directorate)**

1 rue Delpech - 3<sup>rd</sup> floor 31000 Toulouse

Metro Line B - François Verdier

Accommodation department - Housing benefits service (Instal'Toit).

**CONTACT** [https://hondiscrimination.](https://hondiscrimination.toulouse.fr/politiques-de-solidarite)

[toulouse.fr/politiques-de-solidarite](https://hondiscrimination.toulouse.fr/politiques-de-solidarite)

**Space for Diversity and Secularism**

38 rue d'Aubuisson 31000 Toulouse

Metro Line B - François Verdier

If you feel that you have been discriminated against during your housing search.

**CONTACT** +33 (0)5 81 91 79 60

[espace-diversites-laicite@mairie-toulouse.fr](mailto:espace-diversites-laicite@mairie-toulouse.fr)

<https://hondiscrimination.toulouse.fr/espace-diversites-laicite/presentation-du-lieu>





# OCCITANIE

*tu nous régales.*



Quel régal de pouvoir manger local et régional avec Sud de France, la marque des bons produits de la Région Occitanie.

Recettes et bons plans sur [sud-de-france.com](http://sud-de-france.com)



www.sud-de-france.com - www.la-region-occitanie.fr

POUR VOTRE SANTÉ, ÉVITEZ DE MANGER TROP GRAS, TROP SUCRÉ, TROP SALÉ. [MANGERBOUGER.FR](http://MANGERBOUGER.FR)



**welcomedesk.univ-toulouse.fr**  
**welcomedesk@univ-toulouse.fr**

Accueil-Welcome Desk  
University of Toulouse  
Allée Matilda  
41, allées Jules Guesde  
310013 Toulouse  
Metro Line B - Palais de Justice



@Univ\_Toulouse

University of Toulouse  
welcome tools are certified

